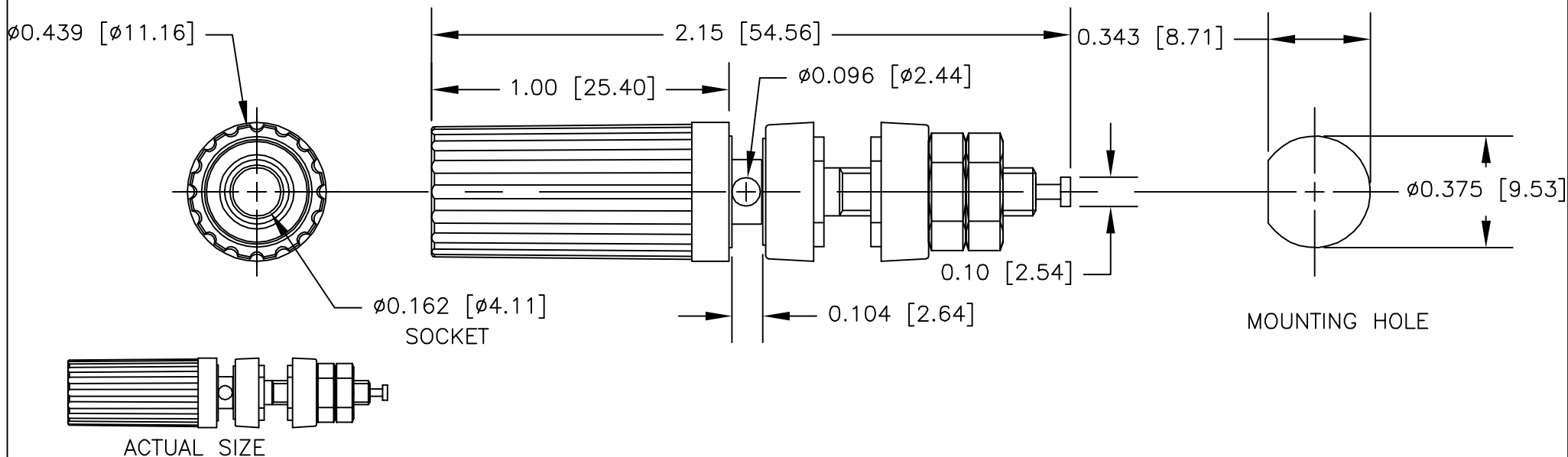


NOTES: UNLESS OTHERWISE SPECIFIED

- CONSTRUCTION:  
 THUMB SCREW & INSULATOR: MOLDED NYLON. AVAILABLE  
 IN BLACK OR RED.  
 FRAME: NICKEL PLATED BRASS FRAME.
- PERFORMANCE:  
 MAXIMUM CURRENT: XX  
 MAXIMUM VOLTAGE: XX  
 MAXIMUM TEMPERATURE: XX
- FEATURES:  
 ACCEPTS SHROUDED AND STANDARD BANANA PLUGS.  
 FOR PANEL THICKNESS 0.62 [1.58] TO 0.250 [6.35].

LTR	DESCRIPTION	DATE	APPROVEI



		UNLESS OTHERWISE SPECIFIED DIMENSIONS ARE IN INCHES TOLERANCES ARE: FRACTIONS DECIMALS ANGLES ± .XX ± ± .XXX ±	CONTRACT NO.		<b>E-Z-HOOK</b> DIVISION OF TEKTEST INC. ARCADIA, CA 91006 U.S.A.				
			APPROVALS	DATE					
		MATERIAL SEE NOTE.	DRAWN	R.L.	3/09	DESCRIPTION SHROUDED OR STD BAN PLUG BINDING POST			
			APPROVED BY				SIZE	CODE IDENT NO.	DRAWING NO.
NEXT ASSY	USED ON	FINISH SEE NOTE.				A	08505	9282	
APPLICATION		DO NOT SCALE DRAWING				SCALE 2:1		SHEET 1 OF 1	