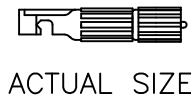
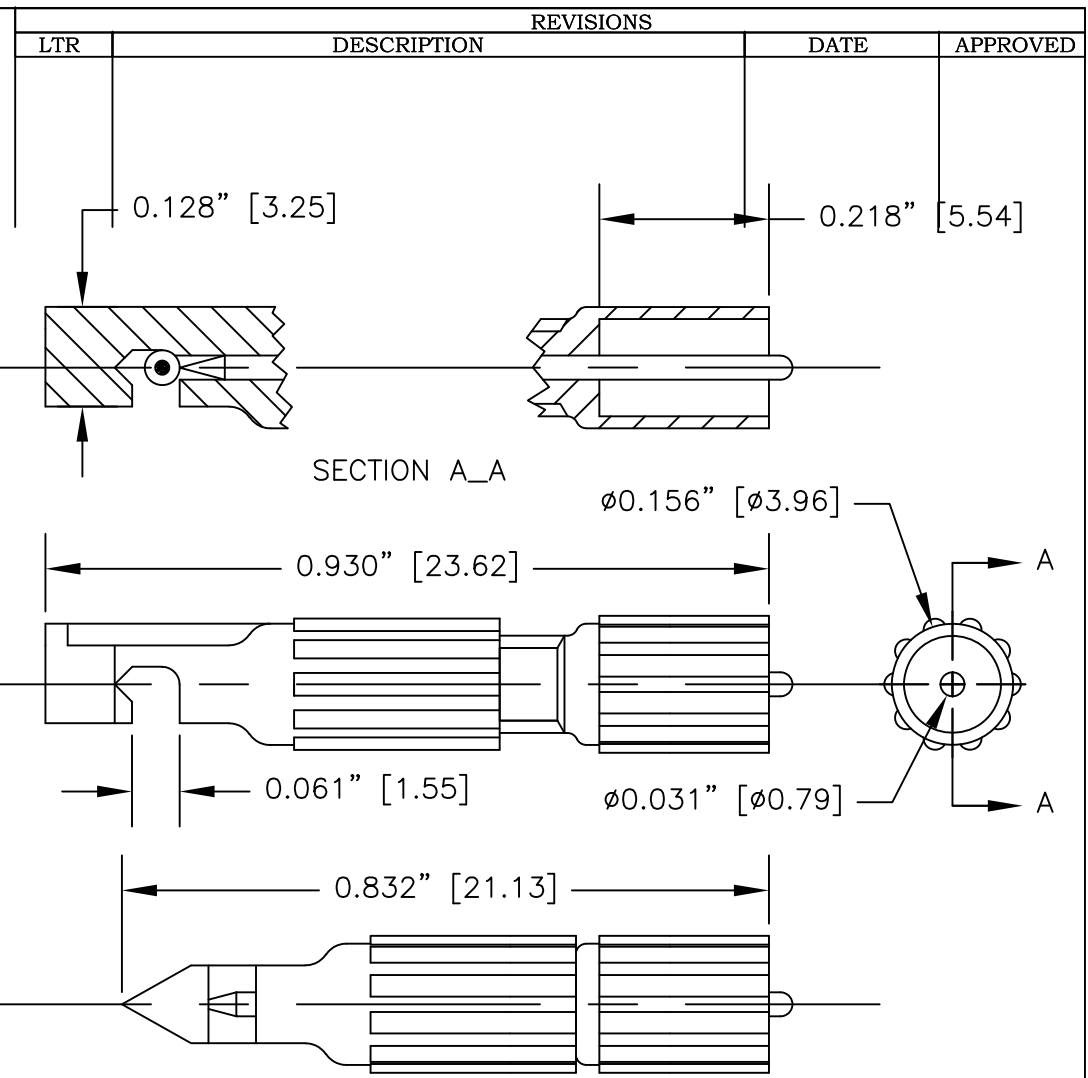


NOTES: UNLESS OTHERWISE SPECIFIED

- CONSTRUCTION:
HOUSING & PLUNGER: NYLON. AVAILABLE ONLY IN GRAY.
NEEDLE: NICKEL PLATED STEEL.
- PERFORMANCE:
MAXIMUM CURRENT: 500 mA
MAXIMUM VOLTAGE: 300 V
MAXIMUM TEMPERATURE: 200°F (93°C)
- FEATURES:
SHROUDED $\phi 0.030$ [$\phi 0.76$] PIN PLUG CONNECTS TO ANY STANDARD $\phi 0.030$ [$\phi 0.76$] SOCKET.
NEEDLE PIERCES LEADS UP TO $\phi 0.050$ [$\phi 1.27$].



		UNLESS OTHERWISE SPECIFIED DIMENSIONS ARE IN INCHES TOLERANCES ARE: FRACTIONS DECIMALS ANGLES ± .XX ± ± .XXX ±	CONTRACT NO.		E-Z-HOOK DIVISION OF TEKTEST INC. ARCADIA, CA 91006 U.S.A.			
			APPROVALS	DATE				
		MATERIAL SEE NOTE.	APPROVED BY		DESCRIPTION E-Z-MICRO HOOK, INSULATION-PIERCING CONNECTOR			
		FINISH SEE NOTE.			SIZE	CODE IDENT NO.	DRAWING NO.	REV.
NEXT ASSY	USED ON				A	08505	XEPCOLOR	
APPLICATION		DO NOT SCALE DRAWING		SCALE		4:1		SHEET 1 OF 1

THE INFORMATION CONTAINED IN THIS DOCUMENT IS PROPRIETARY TO E-Z-HOOK. THE INFORMATION IS NOT TO BE REPRODUCED WITHOUT PRIOR WRITTEN PERMISSION OF E-Z-HOOK, DIV. OF TEKTEST INC. MAXIMUM TESTED RATINGS IN A HANDS-FREE CONTROLLED ENVIRONMENT. MAXIMUM RATINGS ARE NOT TO BE USED CONCURRENTLY.