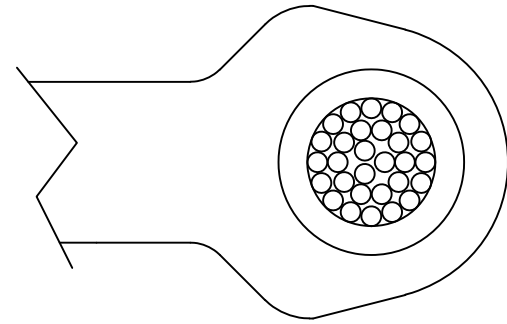


NOTES: UNLESS OTHERWISE SPECIFIED

1. MATERIAL:
CLIP: ZIN PLATED STEEL
HARDWARE: BRASS
2. PERFORMANCE:
MAXIMUM CURRENT: 20 AMPS
3. FEATURES:
MAX JAW OPENING: 0.52 [13.2]
MAX WIRE AWG: 12AWG

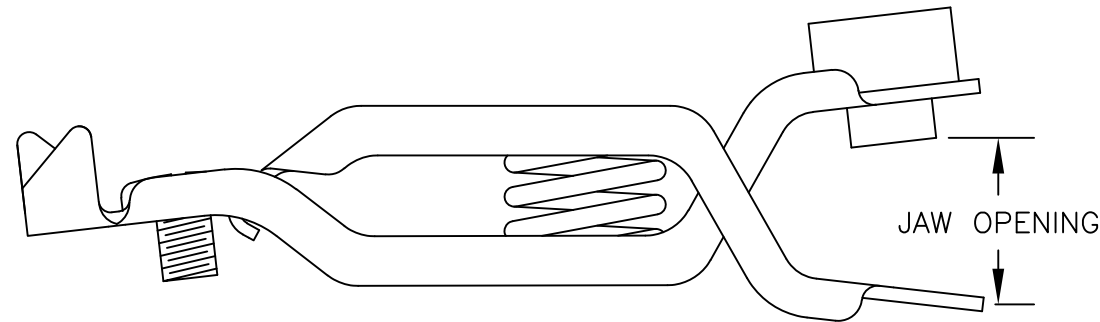
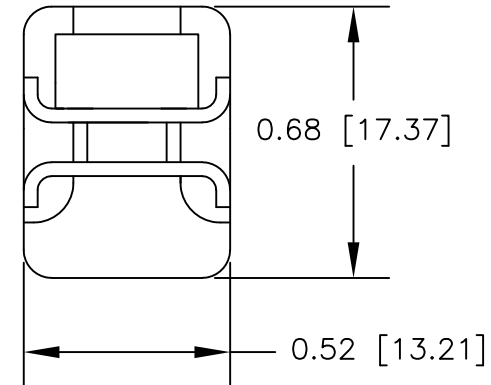
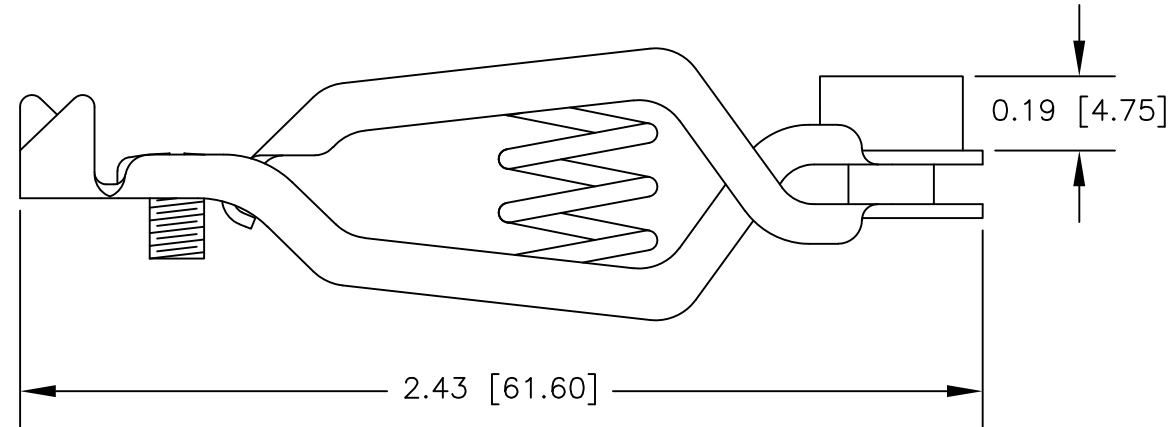
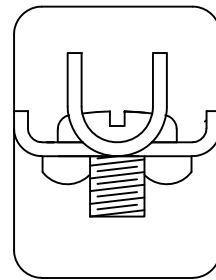
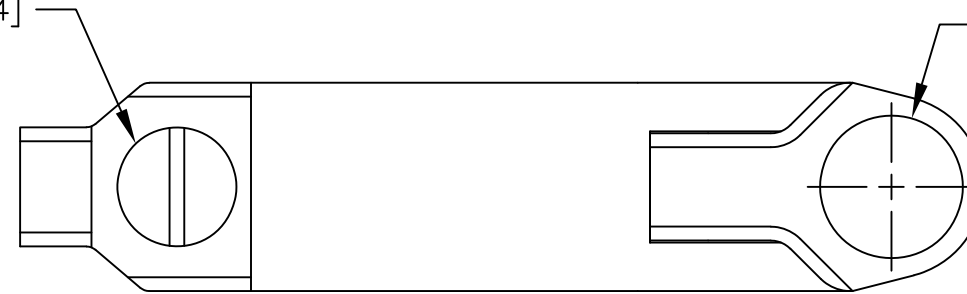
LTR	REVISIONS		DATE	APPROVED
	DESCRIPTION			



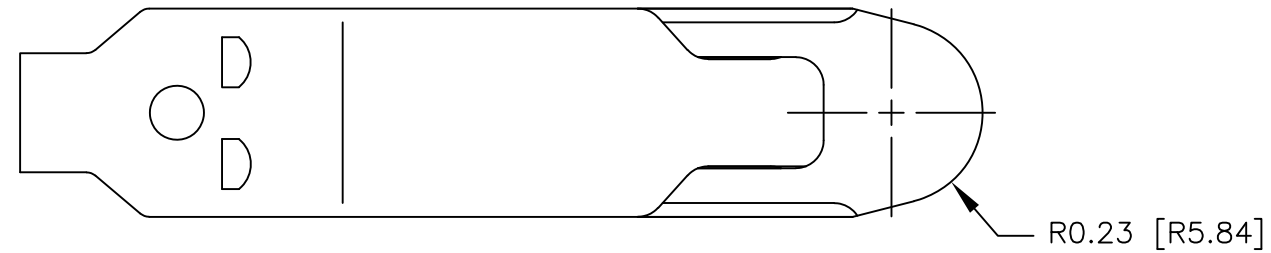
DETAILS
BED OF NAILS

6-32 SCREW X 0.187 [4.74]

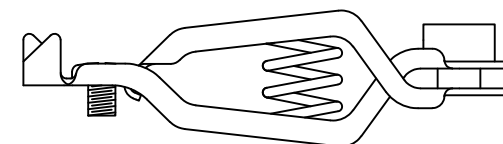
∅0.36 [∅9.14]



JAW OPENING



R0.23 [R5.84]



ACTUAL SIZE

		UNLESS OTHERWISE SPECIFIED DIMENSIONS ARE IN INCHES TOLERANCES ARE: FRACTIONS DECIMALS ANGLES ± N/A .XX ± N/A ± N/A .XXX ± N/A	CONTRACT NO.		E-Z-HOOK DIVISION OF TEKTEST INC. ARCADIA, CA 91006 U.S.A.
			APPROVALS	DATE	
		MATERIAL SEE NOTES	DRAWN S.B.W.	9/72	DESCRIPTION INSULATION PIERCING ALLIGATOR NEEDLE CLUSTER
		FINISH SEE NOTES	APPROVED BY		
NEXT ASSY	USED ON				SIZE B CODE IDENT NO. 08505 DRAWING NO. 9350 REV.
APPLICATION		DO NOT SCALE DRAWING			SCALE 2:1 SHEET 1 OF 1