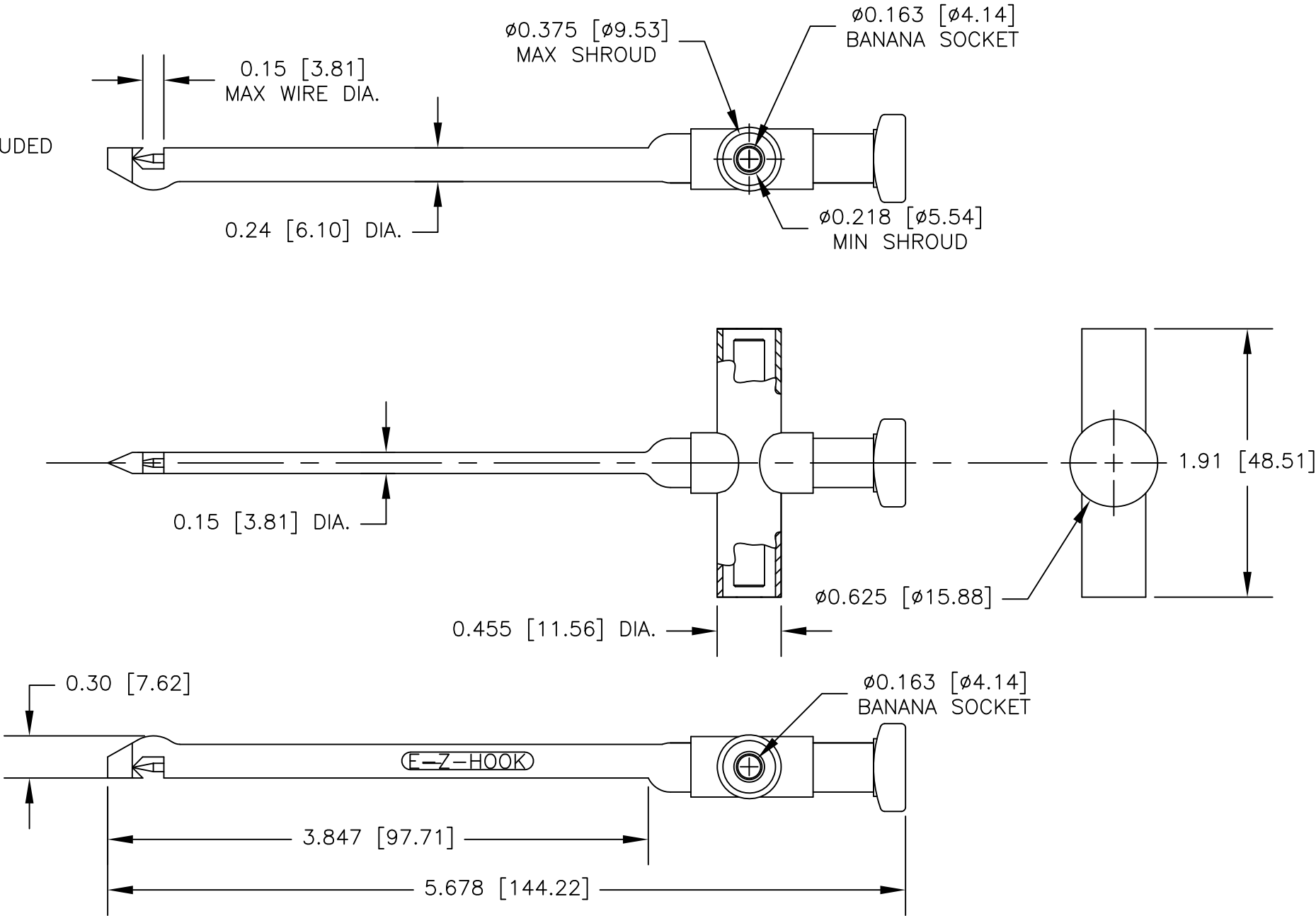


NOTES: UNLESS OTHERWISE SPECIFIED

1. CONSTRUCTION:
HOUSING & PLUNGER & SLIDE: MOLDED NYLON. AVAILABLE IN TEN COLORS.
CONTACT NEEDLE & SPRING: STAINLESS STEEL.
BANANA SOCKET: BRASS.
2. PERFORMANCE:
MAXIMUM CURRENT: 500 mA
MAXIMUM VOLTAGE: 300 V
MAXIMUM TEMPERATURE: 200°F (93°C)

2. FEATURES:
NEEDLE PIERCES WIRE $\varnothing 0.050$ [$\varnothing 1.27$] TO $\varnothing 0.15$ [$\varnothing 3.81$].
DOUBLE BANANA SOCKET ACCEPTS SHROUDED AND UNSHROUDED
STANDARD BANANA PLUGS ON BOTH ENDS OF THE HANDLE.

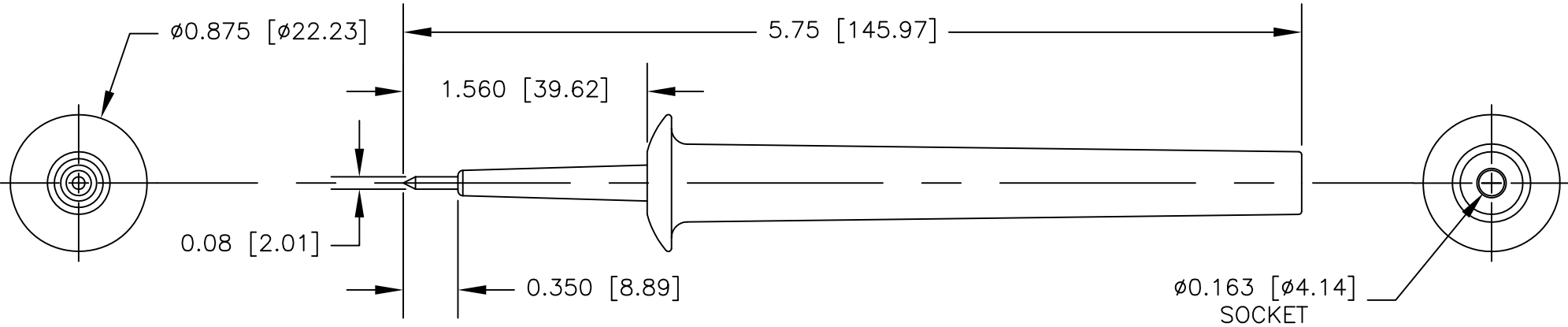


		UNLESS OTHERWISE SPECIFIED DIMENSIONS ARE IN INCHES TOLERANCES ARE: FRACTIONS DECIMALS ANGLES ± .XX ± ± .XXX ±	CONTRACT NO.		<div>E-Z-HOOK DIVISION OF TEKTEST INC. ARCADIA, CA 91006 U.S.A.</div>			
			APPROVALS	DATE	DESCRIPTION E-Z-MACRO HOOK INSULATION-PIERCING			
			DRAWN S.B.W.	3/98				
		MATERIAL SEE NOTE.	APPROVED BY		SIZE	CODE IDENT NO.	DRAWING NO.	REV.
		FINISH SEE NOTE.			B	08505	XEL	A
NEXT ASSY	USED ON				SCALE	1:1		SHEET 1 OF 1
APPLICATION		DO NOT SCALE DRAWING						

NOTES: UNLESS OTHERWISE SPECIFIED

1. CONSTRUCTION:
HOUSING: MOLDED NYLON. AVAILABLE IN BLACK,
RED, GREEN OR BLUE.
CONTACT TIP: NICKEL PLATED STEEL
SOCKET: NICKEL PLATED BRASS
2. PERFORMANCE:
MAXIMUM CURRENT: 10 AMPS
MAXIMUM VOLTAGE: 1000 V
MAXIMUM TEMPERATURE: 200°F (93°C)

REVISIONS			
LTR	DESCRIPTION	DATE	APPROVED

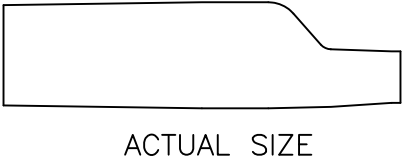
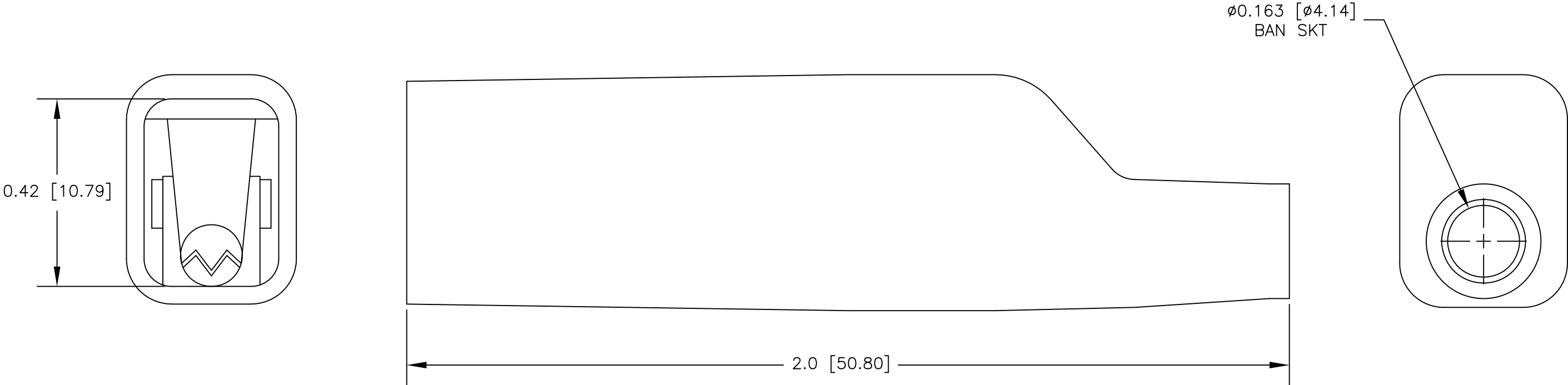


		UNLESS OTHERWISE SPECIFIED DIMENSIONS ARE IN INCHES TOLERANCES ARE: FRACTIONS DECIMALS ANGLES ± .XX ± ± .XXX ±	CONTRACT NO.		<div>E-Z-HOOK®</div> <div>DIVISION OF TEKTEST INC. ARCADIA, CA 91006 U.S.A.</div>			
			APPROVALS	DATE	DESCRIPTION STD PIN TIP PROBE WITH BAN SKT			
			DRAWN R.L.	3/15				
		MATERIAL SEE NOTE.	APPROVED BY		SIZE	CODE IDENT NO.	DRAWING NO.	REV.
		FINISH SEE NOTE.			B	08505	31	
NEXT ASSY	USED ON				SCALE	1:1		SHEET 1 OF 1
APPLICATION		DO NOT SCALE DRAWING						

NOTES: UNLESS OTHERWISE SPECIFIED

1. MATERIAL:
STD GATOR: NICKEL PLATED STEEL
INSULATOR: PVC. AVAILABLE IN ALL TEN COLORS
2. PERFORMANCE:
MAX CURRENT: 10 AMPS
3. FEATURES:
GATOR JAW OPENING: \varnothing 0.31 [\varnothing 7.92]

LTR	REVISIONS		
	DESCRIPTION	DATE	APPROVED

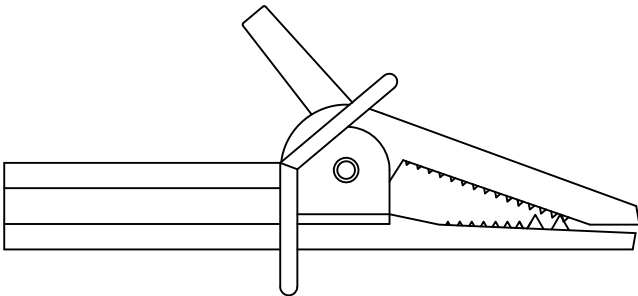
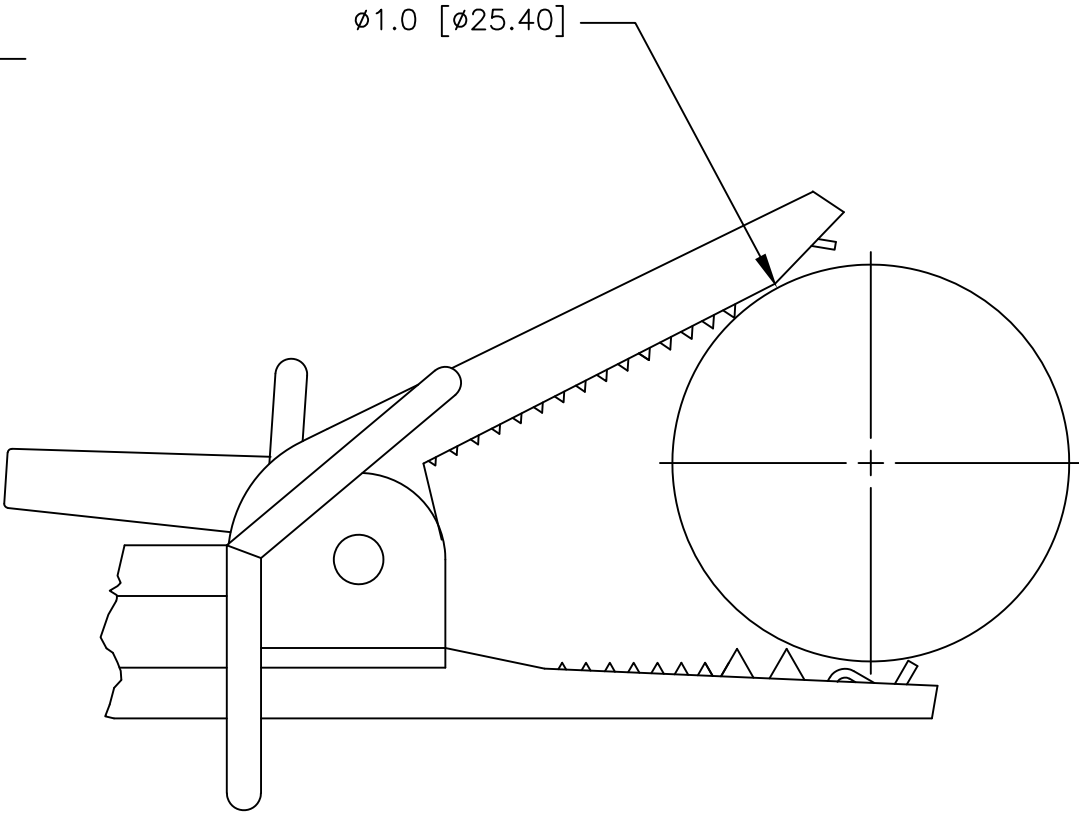
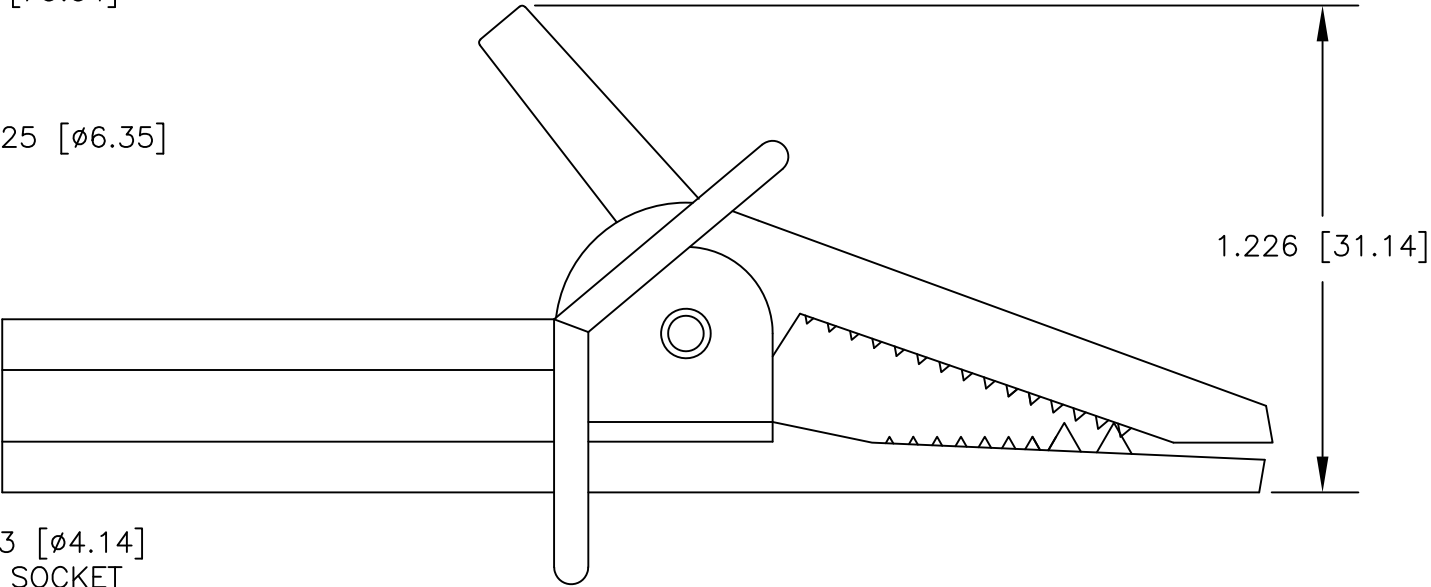
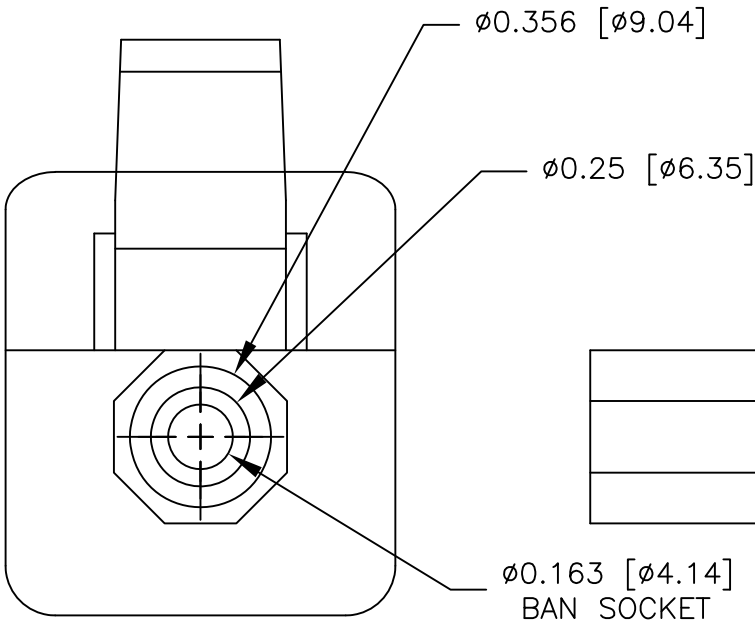
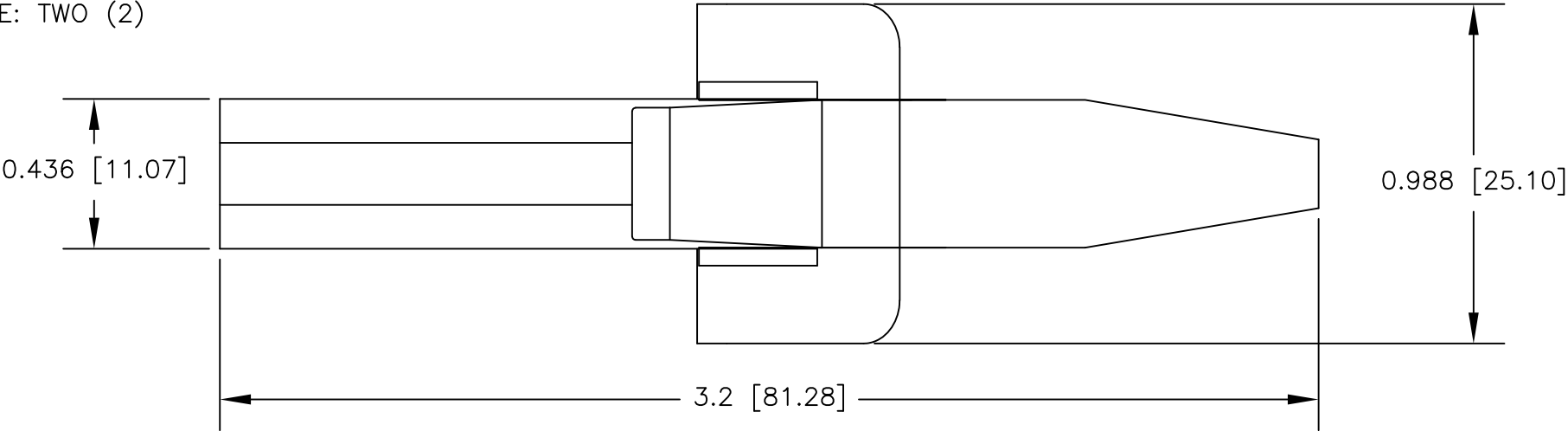


		UNLESS OTHERWISE SPECIFIED DIMENSIONS ARE IN INCHES TOLERANCES ARE: FRACTIONS DECIMALS ANGLES ± .XX ± ± .XXX ±	CONTRACT NO.		E-Z-HOOK® DIVISION OF TEKTEST INC. ARCADIA, CA 91006 U.S.A.			
			APPROVALS	DATE	DESCRIPTION STD GATOR TO STD BAN SKT, ADAPTER			
			DRAWN R.L.	2/19				
		MATERIAL	APPROVED BY		SIZE	CODE IDENT NO.	DRAWING NO.	REV.
		FINISH			B	08505	8016	
NEXT ASSY	USED ON				SCALE 4:1		SHEET 1 OF 1	
APPLICATION		DO NOT SCALE DRAWING						

NOTES: UNLESS OTHERWISE SPECIFIED

1. MATERIAL:
FRAME: NICKEL PLATED STEEL
HOUSING: MOLDED NYLON. AVAILABLE IN TEN COLORS
2. ELECTRICAL: IEC 61010
CURRENT RATING: 20 AMPS
MEASUREMENT CATEGORY: 600V CAT III/1000V CAT II
TEMPERATURE RANGE: −22° (30°C) TO 212°F (100°C)
INSULATION CATEGORY: DOUBLE/REINFORCED
POLLUTION DEGREE: TWO (2)

LTR	REVISIONS		
	DESCRIPTION	DATE	APPROVED



ACTUAL SIZE

		UNLESS OTHERWISE SPECIFIED DIMENSIONS ARE IN INCHES TOLERANCES ARE: FRACTIONS DECIMALS ANGLES ± N/A .XX ± N/A ± N/A .XXX ± N/A	CONTRACT NO.		<div>E-Z-HOOK DIVISION OF TEKTEST INC. ARCADIA, CA 91006 U.S.A.</div>			
			APPROVALS	DATE	DESCRIPTION FLANGED INSULATED ALLIGATOR CLIP			
			DRAWN S.B.W.	5/00				
		MATERIAL SEE NOTES	APPROVED BY		SIZE	CODE IDENT NO.	DRAWING NO.	REV.
		FINISH SEE NOTES			B	08505	9468	
NEXT ASSY	USED ON				SCALE	2:1		
APPLICATION		DO NOT SCALE DRAWING			SHEET 1 OF 1			