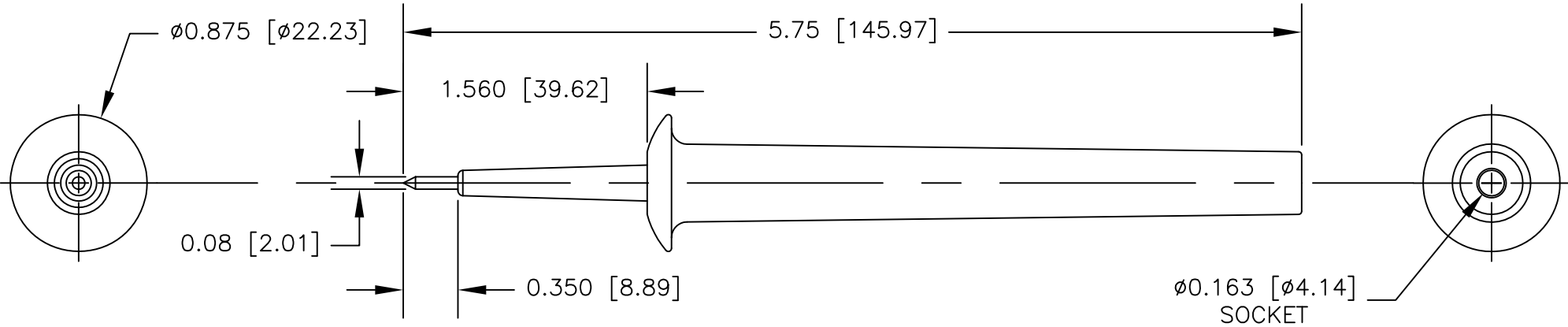


NOTES: UNLESS OTHERWISE SPECIFIED

1. CONSTRUCTION:
HOUSING: MOLDED NYLON. AVAILABLE IN BLACK,
RED, GREEN OR BLUE.
CONTACT TIP: NICKEL PLATED STEEL
SOCKET: NICKEL PLATED BRASS
2. PERFORMANCE:
MAXIMUM CURRENT: 10 AMPS
MAXIMUM VOLTAGE: 1000 V
MAXIMUM TEMPERATURE: 200°F (93°C)

REVISIONS			
LTR	DESCRIPTION	DATE	APPROVED

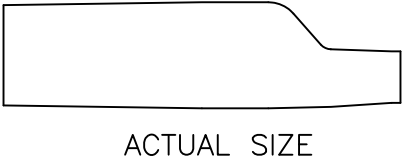
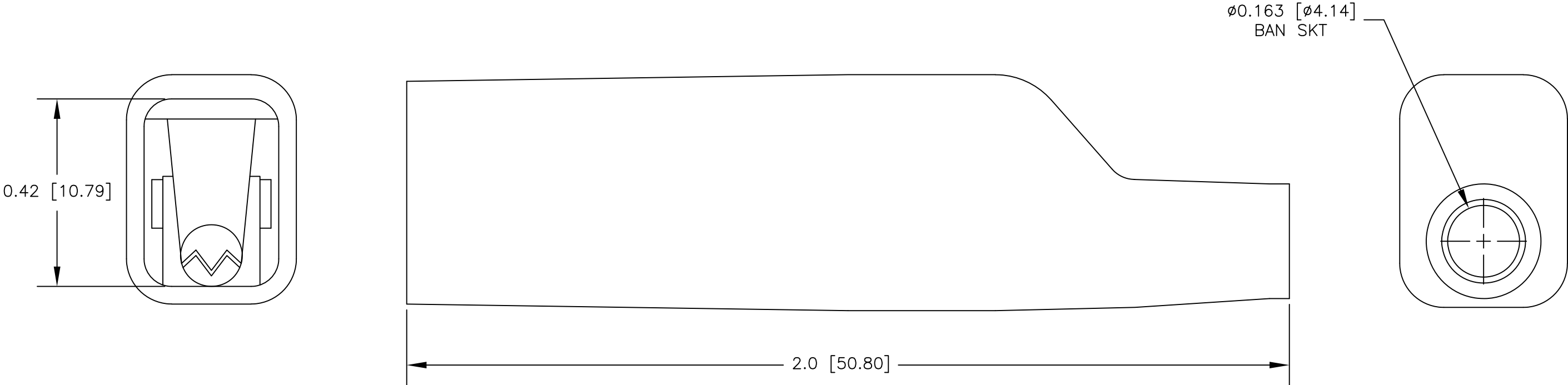


		UNLESS OTHERWISE SPECIFIED DIMENSIONS ARE IN INCHES TOLERANCES ARE: FRACTIONS DECIMALS ANGLES ± .XX ± ± .XXX ±	CONTRACT NO.		<div>E-Z-HOOK! DIVISION OF TEKTEST INC. ARCADIA, CA 91006 U.S.A.</div>					
			APPROVALS	DATE	DESCRIPTION STD PIN TIP PROBE WITH BAN SKT					
			DRAWN	R.L.						3/15
		APPROVED BY								
		MATERIAL SEE NOTE.			SIZE CODE IDENT NO. DRAWING NO. REV. B 08505 31					
		FINISH SEE NOTE.								
NEXT ASSY	USED ON									
APPLICATION		DO NOT SCALE DRAWING			SCALE		1:1		SHEET 1 OF 1	

NOTES: UNLESS OTHERWISE SPECIFIED

1. MATERIAL:
STD GATOR: NICKEL PLATED STEEL
INSULATOR: PVC. AVAILABLE IN ALL TEN COLORS
2. PERFORMANCE:
MAX CURRENT: 10 AMPS
3. FEATURES:
GATOR JAW OPENING: $\varnothing 0.31$ [$\varnothing 7.92$]

LTR	REVISIONS		
	DESCRIPTION	DATE	APPROVED



		UNLESS OTHERWISE SPECIFIED DIMENSIONS ARE IN INCHES TOLERANCES ARE: FRACTIONS DECIMALS ANGLES ± .XX ± ± .XXX ±	CONTRACT NO.		<div>E-Z-HOOK! DIVISION OF TEKTEST INC. ARCADIA, CA 91006 U.S.A.</div>				
			APPROVALS	DATE	DESCRIPTION STD GATOR TO STD BAN SKT, ADAPTER				
			DRAWN R.L.	2/19					
		MATERIAL	APPROVED BY						
		FINISH			SIZE	CODE IDENT NO.	DRAWING NO.		REV.
NEXT ASSY	USED ON				B	08505	8016		
APPLICATION		DO NOT SCALE DRAWING			SCALE 4:1				SHEET 1 OF 1