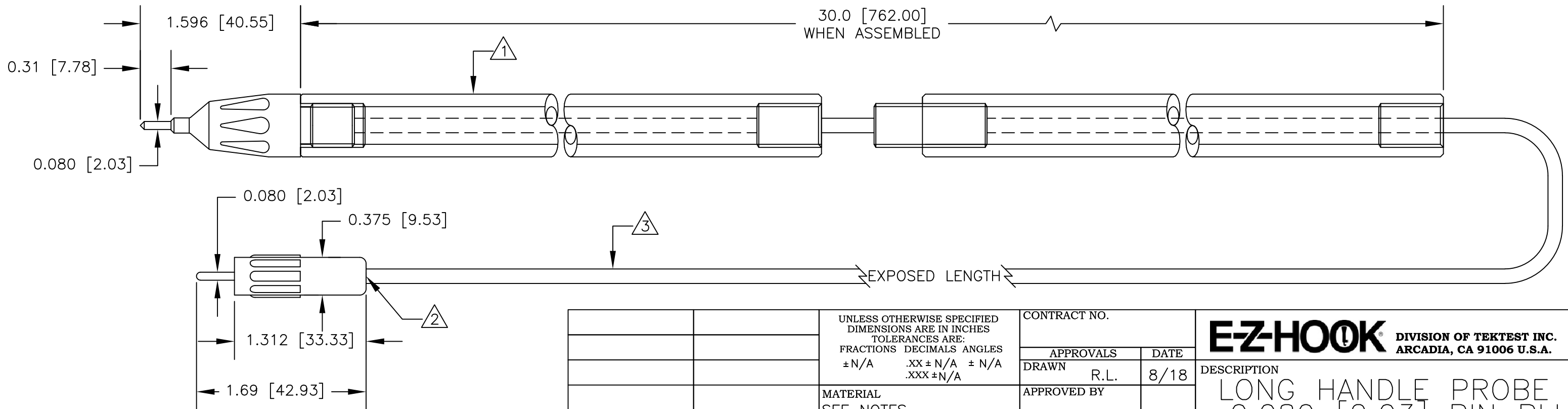


NOTES: UNLESS OTHERWISE SPECIFIED

1. P/N: 40 PROBE
 HOUSING: MOLDED NYLON. AVAILABLE IN BLACK OR RED
 CONTACT: NICKEL PLATED BRASS.
 TUBING: CLEAR ACRYLIC
 ADAPTER : ANODIZED ALUMINUM. AVAILABLE IN BLACK OR RED
2. P/N: 9250COLOR
 HOUSING: MOLDED ACETAL. AVAILABLE IN BLK & RED
 CONTACT: NICKEL PLATED BRASS
3. P/N: W-600/COLOR
 18AWG TINNED COPPER
 0.144 [3.66] O.D. PVC INSULATION
 AVAILABLE IN TEN COLORS.
4. PERFORMANCE:
 MAXIMUM CURRENT: 4.0 AMPS
 MAXIMUM VOLTAGE: HANDHELD: 33VAC/60VDC
 HANDS FREE: 3500 VRMS
 MAXIMUM TEMPERATURE: 176°F (80°C)

LTR	REVISIONS		DATE	APPROVED
	DESCRIPTION			



UNLESS OTHERWISE SPECIFIED DIMENSIONS ARE IN INCHES TOLERANCES ARE: FRACTIONS DECIMALS ANGLES ± N/A .XX ± N/A ± N/A .XXX ± N/A		CONTRACT NO.		E-Z-HOOK DIVISION OF TEKTEST INC. ARCADIA, CA 91006 U.S.A.	
MATERIAL SEE NOTES		APPROVALS DRAWN R.L.	DATE 8/18		
FINISH SEE NOTES		APPROVED BY		DESCRIPTION LONG HANDLE PROBE TO 0.080 [2.03] PIN PLUG	
NEXT ASSY	USED ON	SCALE 1:1		SIZE B	CODE IDENT NO. 08505
APPLICATION		DO NOT SCALE DRAWING		DRAWING NO. AX640	REV.
SHEET 1 OF 1					