

NOTES: UNLESS OTHERWISE SPECIFIED

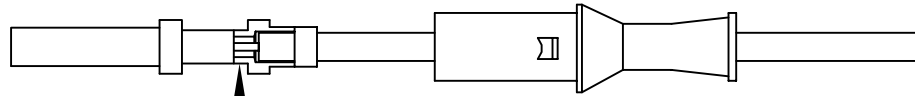
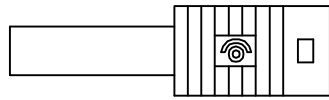
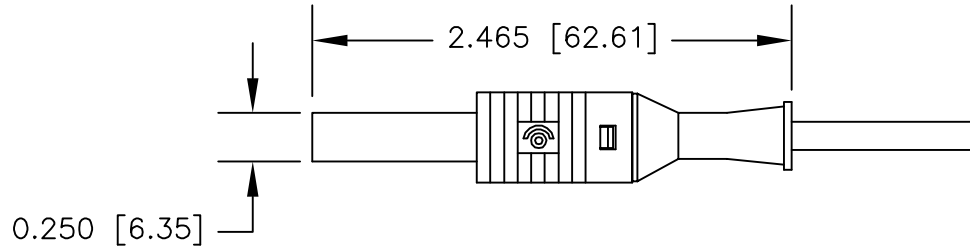
1. CONSTRUCTION:

CONTACT SPRING: NICKEL PLATED BERYLLIUM COPPER  
 INSULATOR: POLYPROPYLENE  
 FRAME: NICKEL PLATED BRASS.

2. RATINGS:

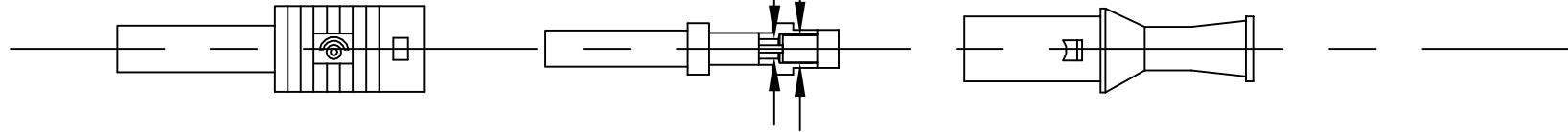
VOLTAGE: 1000V CAT II/ 1000V CAT III/600V CAT IV  
 MAXIMUM CURRENT: 36 AMPS

LTR	DESCRIPTION	DATE	APPROVEI



STRIP WIRE 1/4" AND SOLDER HERE. INSERT INTO REAR HOUSING. PUSH MAIN HOUSING INTO REAR HOUSING UNTIL BARB SNAPS INTO PLACE. ADD 1.4" TO CUT LENGTH

0.100 [2.54] MAX CONTACT DIA.  
 0.161 [4.09] MAX INSULATION DIA.



		UNLESS OTHERWISE SPECIFIED DIMENSIONS ARE IN INCHES TOLERANCES ARE: FRACTIONS DECIMALS ANGLES ± .XX ± ± .XXX ±	CONTRACT NO.		<b>E-Z-HOOK</b> DIVISION OF TEKTEST INC. ARCADIA, CA 91006 U.S.A.			
			APPROVALS	DATE				
		MATERIAL SEE NOTE.	DRAWN	R.L.	4/11	DESCRIPTION		
			APPROVED BY	STRAIGHT SHROUDED SOCKET				
		FINISH SEE NOTE.			SIZE	CODE IDENT NO.	DRAWING NO.	REV
NEXT ASSY	USED ON				A	08505	9387	
APPLICATION		DO NOT SCALE DRAWING			SCALE	1:1	SHEET 1 OF 1	