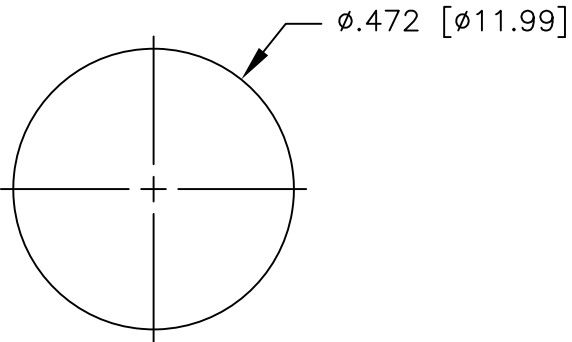


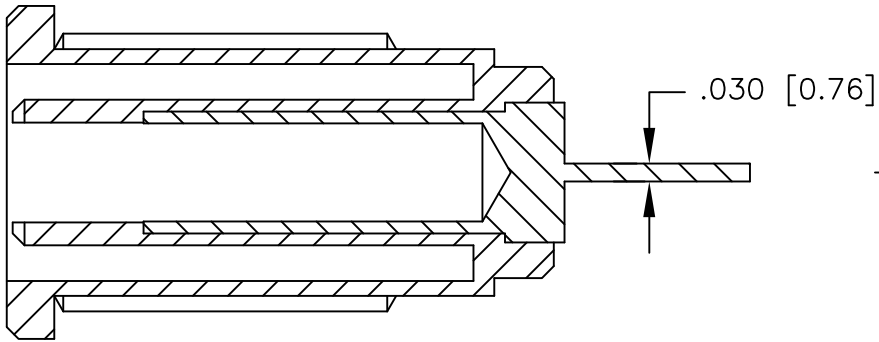
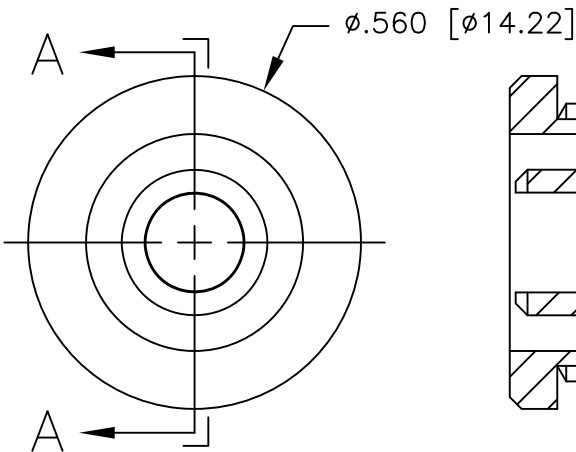
NOTES: UNLESS OTHERWISE SPECIFIED

1. CONSTRUCTION:
HOUSING & NUT: MOLDED PLASTIC. AVAILABLE IN BLK OR RED
CONTACTS: NICKEL PLATED
2. PERFORMANCE: IEC 1010
MAXIMUM CURRENT: 30 AMPS
MAXIMUM VOLTAGE: 1000V CAT II
3. FEATURES:
ACCEPTS STANDARD BANANA PLUG & SHROUDED BANANA PLUGS

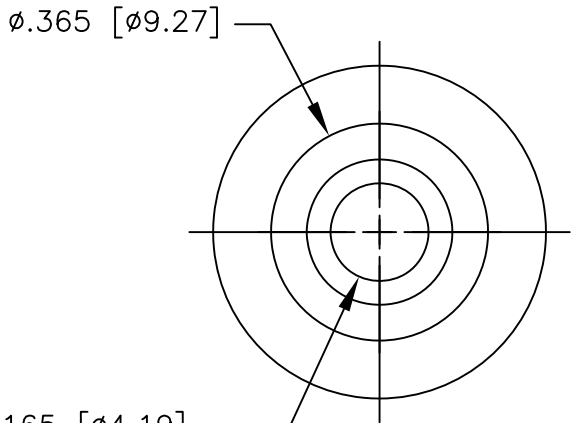
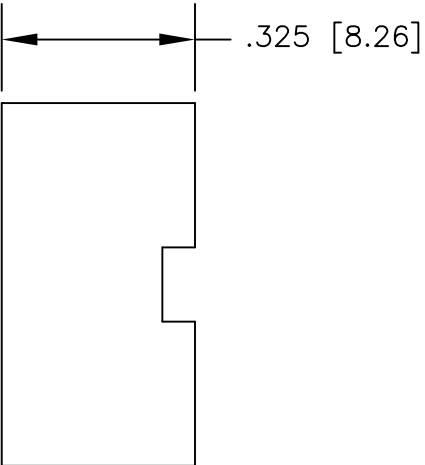
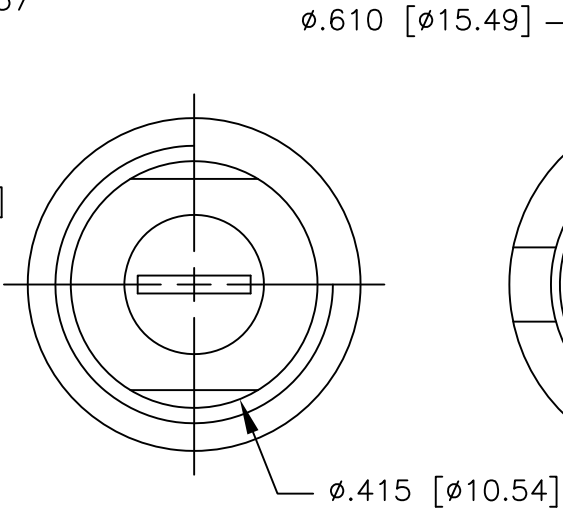
REVISIONS			
LTR	DESCRIPTION	DATE	APPROVED



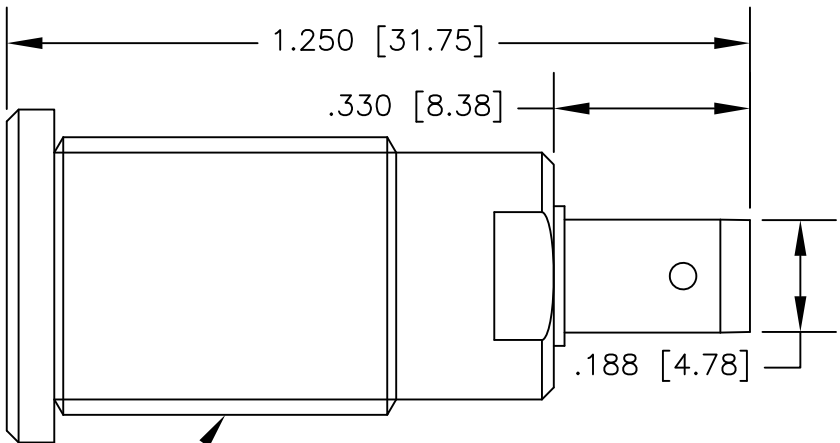
MOUNTING HOLE
MAX PANEL THICKNESS: 0.437



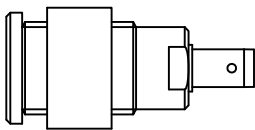
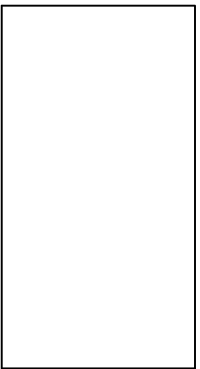
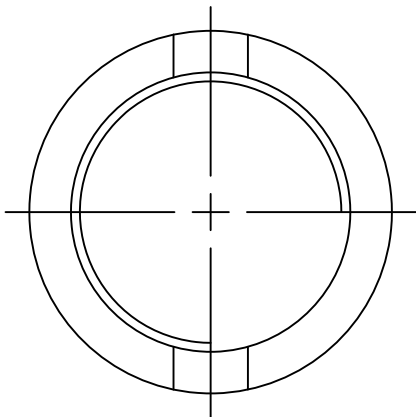
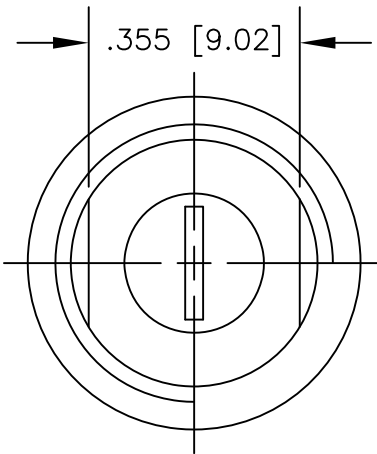
SECTION A—A



0.165 [04.19]
BANANA SOCKET
ACCEPTS SHROUDS



12 X .74MM THREAD



ACTUAL SIZE

		UNLESS OTHERWISE SPECIFIED DIMENSIONS ARE IN INCHES TOLERANCES ARE: FRACTIONS DECIMALS ANGLES ± N/A .XX ± N/A ± N/A .XXX ± N/A	CONTRACT NO.		<div>E-Z-HOOK DIVISION OF TEKTEST INC. ARCADIA, CA 91006 U.S.A.</div> <div>DESCRIPTION SHROUDED STD BAN SOCKET PANEL MOUNT</div>			
			APPROVALS	DATE				
		MATERIAL SEE NOTES	DRAWN R.L.	1/20				
			APPROVED BY					
		FINISH SEE NOTES			SIZE	CODE IDENT NO.	DRAWING NO.	REV.
NEXT ASSY	USED ON				B	08505	9397	
APPLICATION		DO NOT SCALE DRAWING			SCALE 3:1		SHEET 1 OF 1	