

NOTES: UNLESS OTHERWISE SPECIFIED

1. P/N: 8901  
 BODY & FITTINGS: NICKEL PLATED BRASS  
 CONTACT: GOLD PLATED BRASS.  
 DIELECTRIC: PTFE  
 SPRING: NICKEL PLATED SK5  
 GASKET: RED RUBBER.

2. P/N: SR58BLK  
 BOOT: BLK MOLDED PVC

3. P/N: Y-1000  
 HOUSING: BLK MOLDED NYLON  
 HARDWARE: SS SCREW, NUTS & WASHER

4. P/N: 9203BLK  
 HOUSING: BLK MOLDED NYLON.  
 FRAME: NICKEL PLATED BRASS.  
 CONTACT: NICKEL PLATED BeCu OR PHOSPHOR BRONZE.

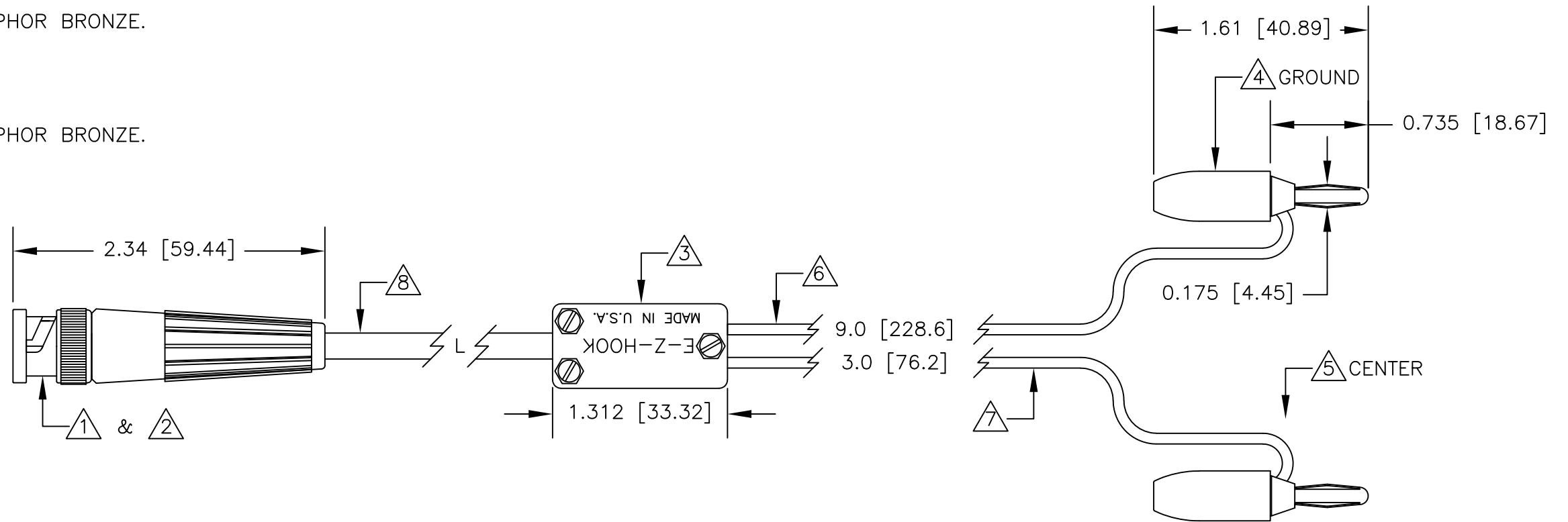
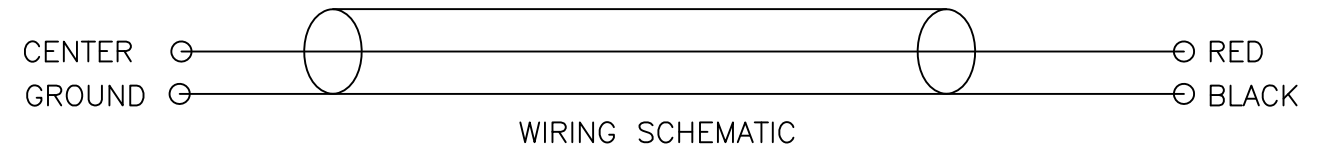
5. P/N: 9203RED  
 HOUSING: BLK MOLDED NYLON.  
 FRAME: NICKEL PLATED BRASS.  
 CONTACT: NICKEL PLATED BeCu OR PHOSPHOR BRONZE.

6. P/N: W-500/0  
 20AWG TINNED COPPER STRANDING  
 0.080 [2.03] O.D. PVC INSULATION

7. P/N: W-500/2  
 20AWG TINNED COPPER STRANDING  
 0.080 [2.03] O.D. PVC INSULATION

8. P/N: C-1000/0  
 20AWG RG58C/U CABLE  
 0.195 [4.95] O.D. PVC INSULATION

LTR	REVISIONS		DATE	APPROVED
	DESCRIPTION			



		UNLESS OTHERWISE SPECIFIED DIMENSIONS ARE IN INCHES TOLERANCES ARE: FRACTIONS DECIMALS ANGLES ± N/A .XX ± N/A ± N/A .XXX ± N/A	CONTRACT NO.		<b>E-Z-HOOK</b> DIVISION OF TEKTEST INC. ARCADIA, CA 91006 U.S.A.
			APPROVALS	DATE	
		MATERIAL SEE NOTE	DRAWN R.L.	8/18	DESCRIPTION BNC MALE TO 9203 STK BAN PLUG LEADS, RG58 CABLE
		FINISH SEE NOTE	APPROVED BY		
NEXT ASSY	USED ON				SIZE <b>B</b> CODE IDENT NO. <b>08505</b> DRAWING NO. <b>1224</b> REV.
APPLICATION		DO NOT SCALE DRAWING			SCALE 1:1 SHEET 1 OF 1