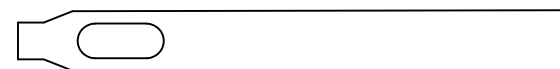
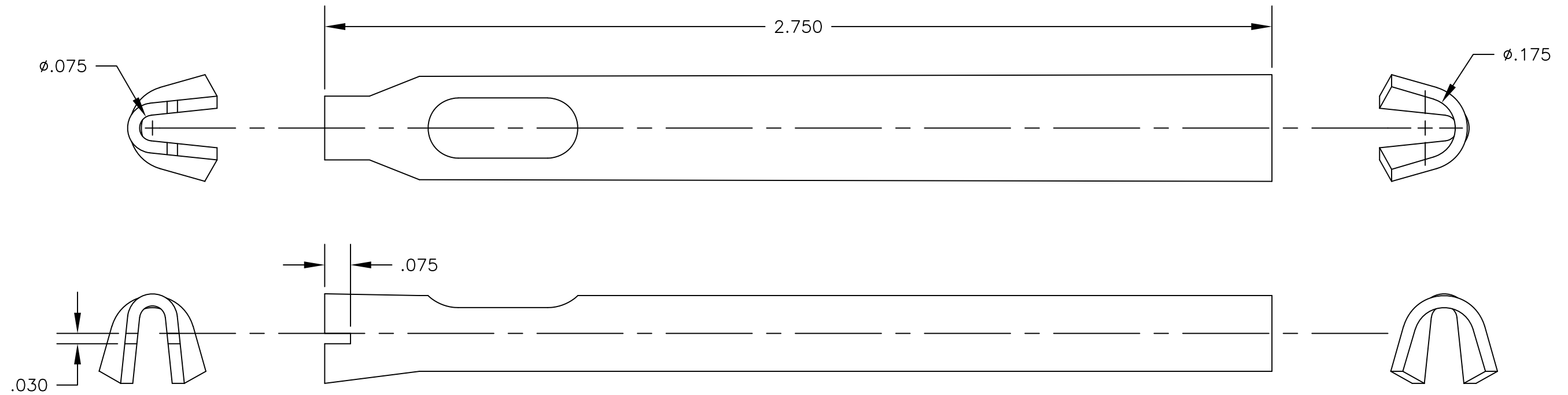


NOTES: UNLESS OTHERWISE SPECIFIED

1. CONSTRUCTION:
COPPER, NICKEL & TIN PLATED STEEL.

2. FEATURES:
DRIVE E-Z-NAIL CLIPS P/N 81-1, 83-8 & 84-1

LTR	REVISIONS		DATE	APPROVED
	DESCRIPTION			



ACTUAL SIZE

		UNLESS OTHERWISE SPECIFIED DIMENSIONS ARE IN INCHES TOLERANCES ARE: FRACTIONS DECIMALS ANGLES ± N/A .XX ± N/A ± N/A .XXX ± N/A	CONTRACT NO.		E-Z-HOOK DIVISION OF TEKTEST INC. ARCADIA, CA 91006 U.S.A.
			APPROVALS	DATE	
		MATERIAL	DRAWN	R.L	4/19
		SEE NOTES	APPROVED BY		DESCRIPTION
		FINISH			81 SERIES NAIL CLIP
		SEE NOTES			DRIVING TOOL
NEXT ASSY	USED ON		SCALE	B 08505	T20
APPLICATION		DO NOT SCALE DRAWING	3:1		
					REV.
					SHEET 1 OF 1