

NOTES: UNLESS OTHERWISE SPECIFIED

1. CONSTRUCTION:

HOUSING & MOUNTING BASE: BLACK. MOLDED NYLON.  
THUMB SCREW HOUSINGS: ONE BLACK, ONE RED.  
MOLDED NYLON.

"N" CONNECTOR: NICKEL PLATED BRASS SHELL, BODY,  
GROUND RING. PTFE INSULATOR.  
SILICONE GASKET. SUS 304  
RETAINING RING. GOLD BRASS PIN.

SOCKET: NICKEL PLATED BRASS.

HARDWARE: ZINC PLATED STEEL SCREWS AND NUT.  
STAINLESS STEEL WASHERS. NICKEL  
PLATED BRASS SHOULDER WASHER,  
SHOULDER NUT, AND BOLT.

2. PERFORMANCE:

MAX CURRENT: 3 AMPS

CONNECTOR ONLY:

IMPEDENCE: 50 OHMS

FREQUENCY RANGE: 0-11 GHz

VSWR: 1.3 MAX @ 9 GHz

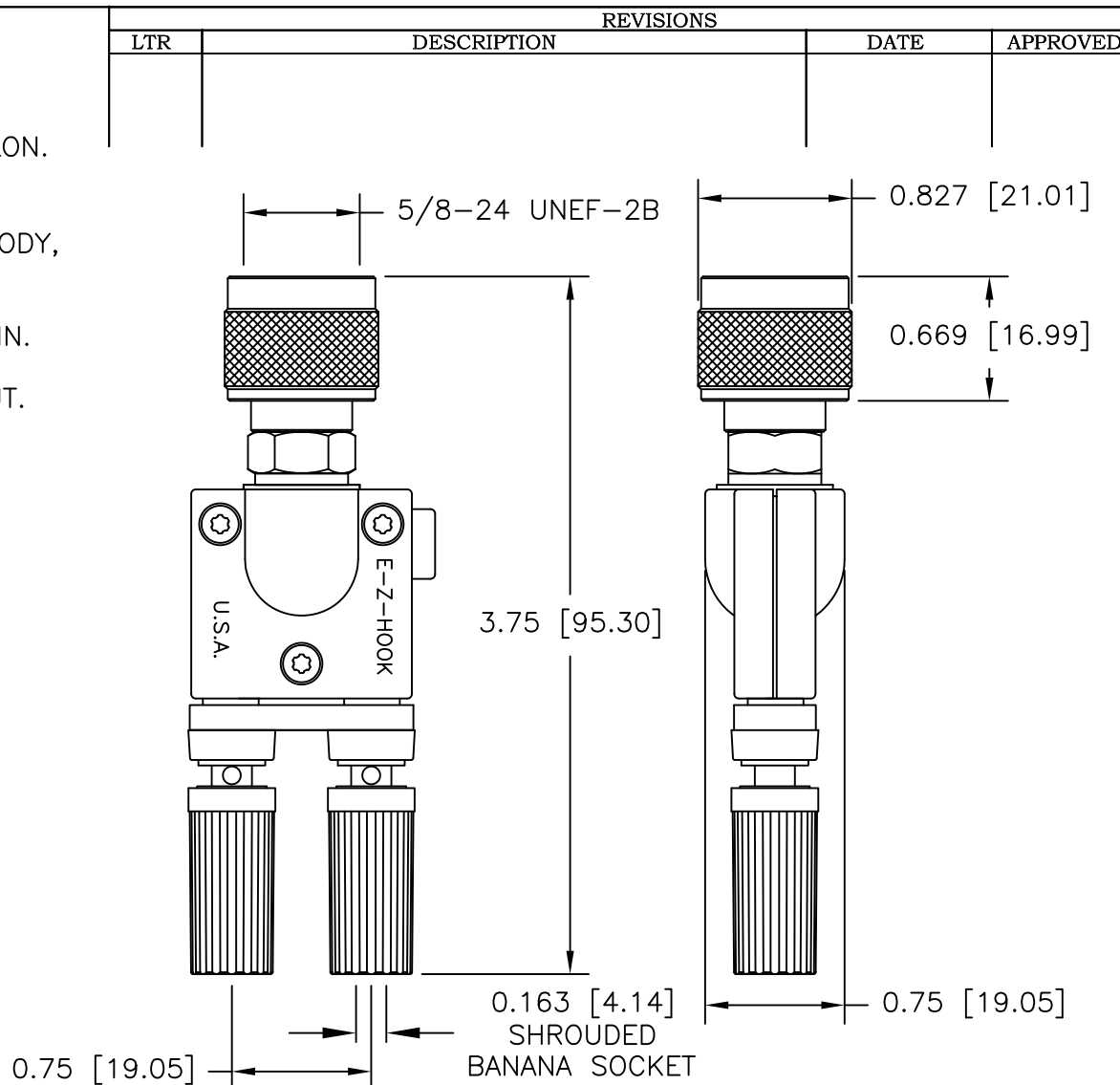
INSERTION LOSS: 0.6 dB MAX X  $\sqrt{f(\text{GHz})}$

WORKING VOLTAGE: 1 k Vrms @ SEA LEVEL

TEMPERATURE RANGE: -65°C TO 165°C

INSULATION RESISTANCE: 5k M OHMS MIN

HOUSING ADAPTER IS NOT RF SHIELDED AND HAS  
NO FREQUENCY RATING.



		UNLESS OTHERWISE SPECIFIED DIMENSIONS ARE IN INCHES TOLERANCES ARE: FRACTIONS DECIMALS ANGLES ± .XX ± ± .XXX ±	CONTRACT NO.		<b>E-Z-HOOK</b> ® DIVISION OF TEKTEST INC. ARCADIA, CA 91006 U.S.A.			
			APPROVALS	DATE				
			DRAWN RL	3/16				
		MATERIAL SEE NOTE.	APPROVED BY		DESCRIPTION TYPE "N" MALE TO STD DBL SHRD BINDING POST ADAPTER			
		FINISH SEE NOTE.			SIZE	CODE IDENT NO.	DRAWING NO.	REV.
NEXT ASSY	USED ON				A	08505	9416	
APPLICATION		DO NOT SCALE DRAWING			SCALE	1:1	SHEET 1 OF 1	