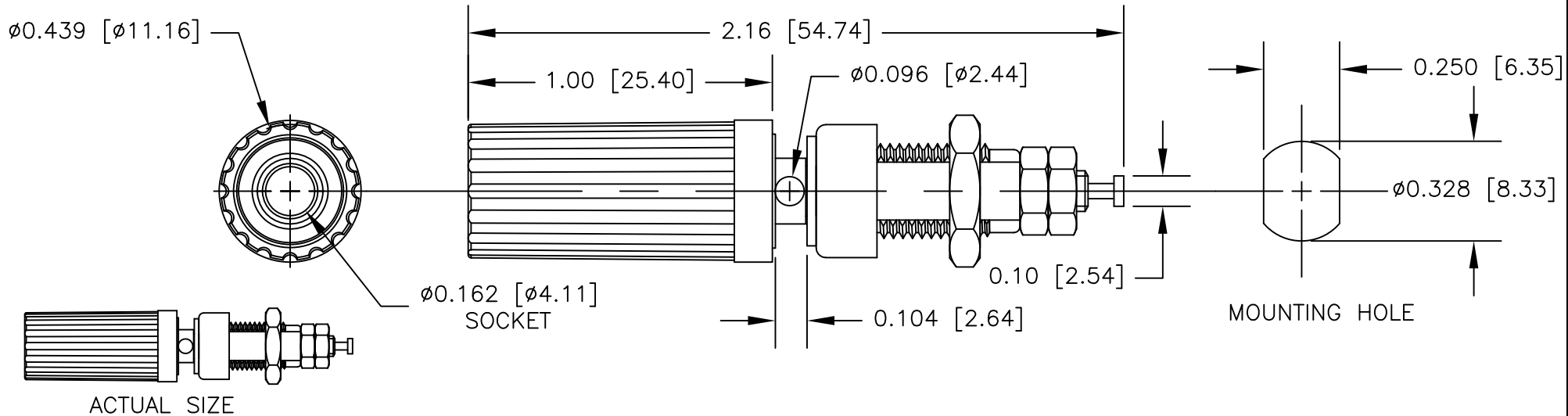


NOTES: UNLESS OTHERWISE SPECIFIED

- CONSTRUCTION:
HOUSING: MOLDED NYLON. AVAILABLE IN BLACK OR RED.
FRAME: NICKEL PLATED BRASS FRAME.
HARDWARE: NICKEL PLATED BRASS NUT, SS 8-32 NUT,
SS WASHER
- PERFORMANCE:
MAXIMUM CURRENT: 15 AMPS
MAXIMUM VOLTAGE: 5700 VRMS
MAXIMUM TEMPERATURE: 200°F (93°C)
- FEATURES:
ACCEPTS SHROUDED AND STANDARD BANANA PLUGS.
FOR PANEL THICKNESS UP TO 0.28 [7.15].

LTR	REVISIONS		
	DESCRIPTION	DATE	APPROVED



		UNLESS OTHERWISE SPECIFIED DIMENSIONS ARE IN INCHES TOLERANCES ARE: FRACTIONS DECIMALS ANGLES ± .XX ± ± .XXX ±	CONTRACT NO.		E-Z-HOOK DIVISION OF TEKTEST INC. ARCADIA, CA 91006 U.S.A.				
			APPROVALS	DATE					
		MATERIAL SEE NOTE.	DRAWN	R.L.	3/09	DESCRIPTION SHROUDED OR STD BAN PLUG BINDING POST			
			FINISH SEE NOTE.	APPROVED BY			SIZE	CODE IDENT NO.	DRAWING NO.
NEXT ASSY	USED ON					A	08505	9280	
APPLICATION		DO NOT SCALE DRAWING				SCALE	2:1		SHEET 1 OF 1