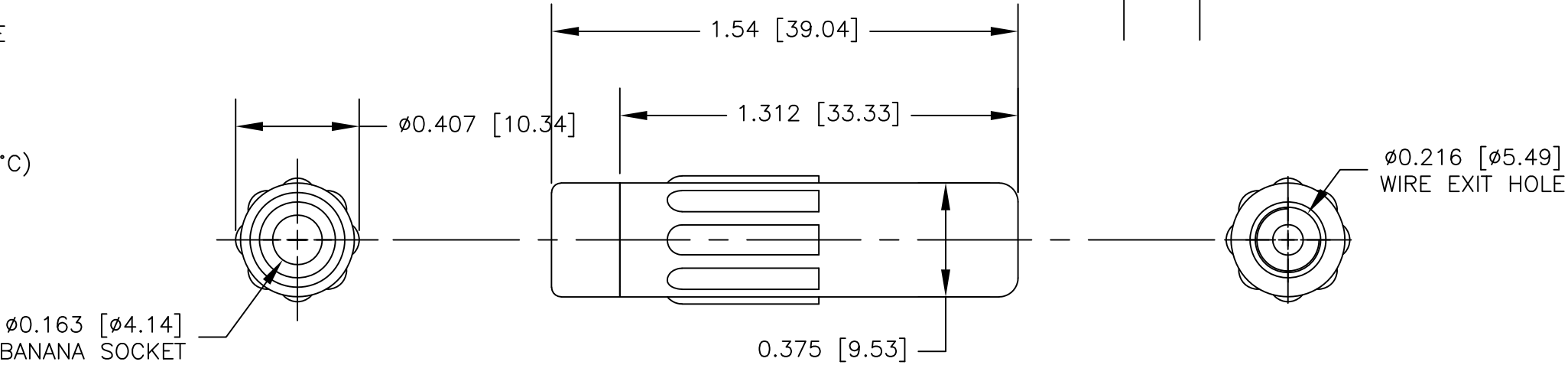
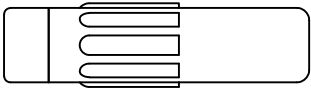
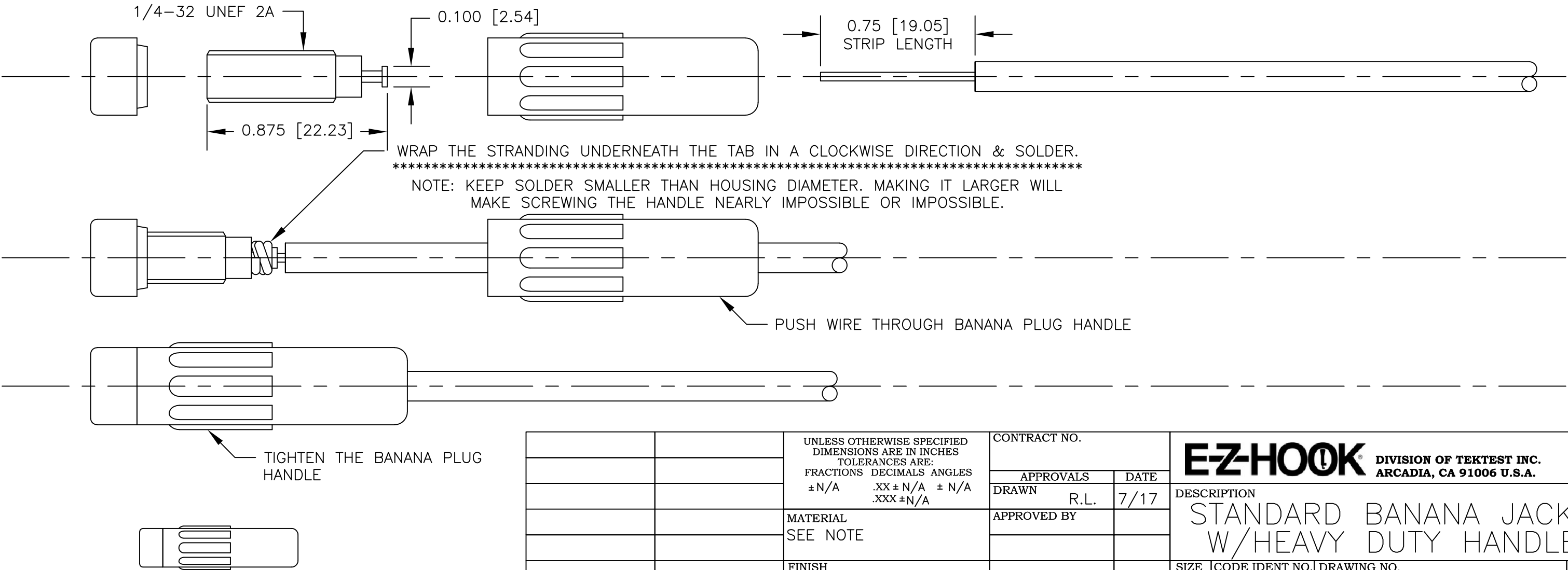


NOTES: UNLESS OTHERWISE SPECIFIED

1. CONSTRUCTION:
HOUSING: MOLDED ACETAL. AVAILABLE IN BLK & RED
FRAME: NICKEL PLATED BRASS.
END CAP: MACHINED DELRIN. WHITE
2. PERFORMANCE:
MAXIMUM CURRENT: 15 AMPS
MAXIMUM VOLTAGE: 3500 VRMS
MAXIMUM TEMPERATURE: 200°F (93°C)



ASSEMBLY INSTRUCTIONS



ACTUAL SIZE

		UNLESS OTHERWISE SPECIFIED DIMENSIONS ARE IN INCHES TOLERANCES ARE: FRACTIONS DECIMALS ANGLES ± N/A .XX ± N/A ± N/A .XXX ± N/A	CONTRACT NO.		E-Z-HOOK DIVISION OF TEKTEST INC. ARCADIA, CA 91006 U.S.A.			
			APPROVALS	DATE				
			DRAWN R.L.	7/17	DESCRIPTION STANDARD BANANA JACK W/HEAVY DUTY HANDLE			
			APPROVED BY					
		MATERIAL SEE NOTE			SIZE	CODE IDENT NO.	DRAWING NO.	REV.
		FINISH SEE NOTE			B	08505	9251	
NEXT ASSY	USED ON				SCALE	2:1		SHEET 1 OF 1
APPLICATION		DO NOT SCALE DRAWING						