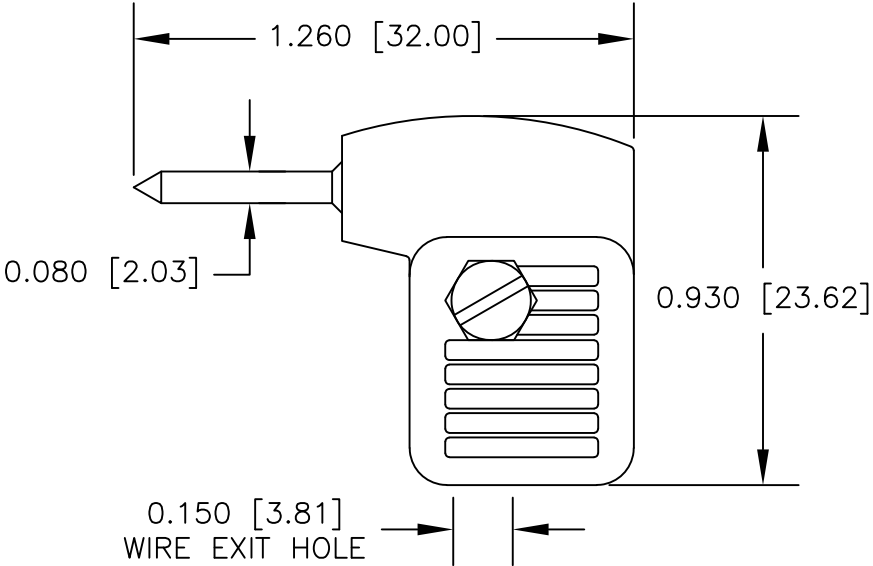


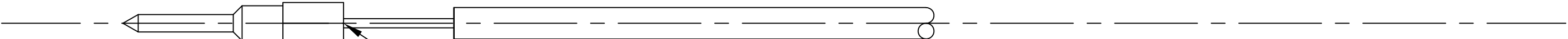
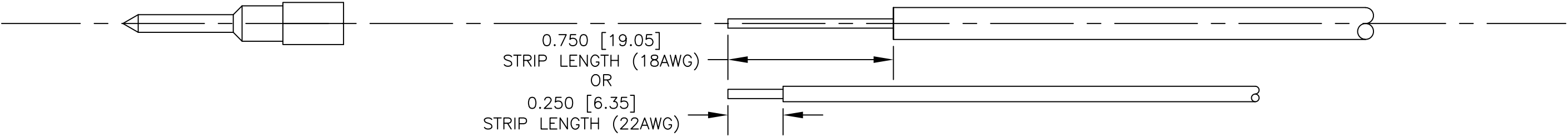
NOTES: UNLESS OTHERWISE SPECIFIED

1. CONSTRUCTION:
HOUSING: MOLDED ABS. AVAILABLE IN BLK OR RED
FRAME: NICKEL PLATED BRASS.
HARDARE: SS SCREW & NUT
2. PERFORMANCE:
MAXIMUM CURRENT: 12 AMPS
MAXIMUM VOLTAGE: 1 kV
MAXIMUM TEMPERATURE: 176°F (80°C)



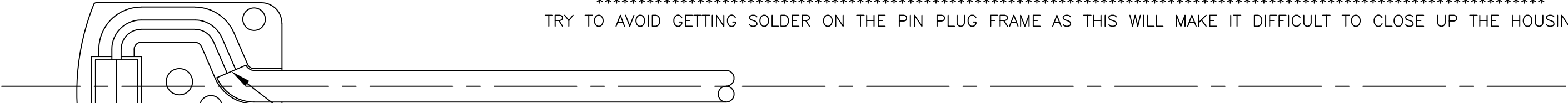
LTR	REVISIONS		DATE	APPROVED
	DESCRIPTION			

ASSEMBLY INSTRUCTIONS

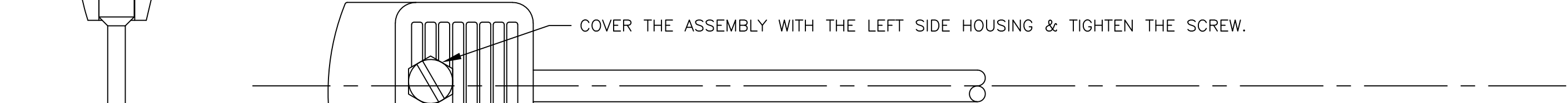


HEAT UP THE STD PIN PLUG FRAME. MELT SOME SOLDER IN THE BACK HOLE. WHILE THE SOLDER IS HOT QUICKLY INSERT THE STRANDING INTO THE SOLDER HOLE. REMOVE THE PIN PLUG FROM THE HEAT. HOLD THE WIRE IN PLACE WHILE THE SOLDER HARDENS.

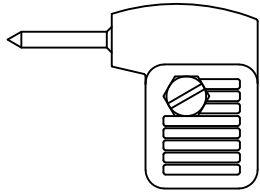
TRY TO AVOID GETTING SOLDER ON THE PIN PLUG FRAME AS THIS WILL MAKE IT DIFFICULT TO CLOSE UP THE HOUSINGS.



PLACE THE PIN PLUG ASSEMBLY IN THE RIGHT SIDE HOUSING GROOVES.



COVER THE ASSEMBLY WITH THE LEFT SIDE HOUSING & TIGHTEN THE SCREW.



ACTUAL SIZE

		UNLESS OTHERWISE SPECIFIED DIMENSIONS ARE IN INCHES TOLERANCES ARE: FRACTIONS DECIMALS ANGLES ± N/A .XX ± N/A ± N/A .XXX ± N/A	CONTRACT NO.		E-Z-HOOK ® DIVISION OF TEKTEST INC. ARCADIA, CA 91006 U.S.A.				
				APPROVALS	DATE	DESCRIPTION METER PIN PLUG			
				DRAWN	R.L.				
		MATERIAL SEE NOTE	APPROVED BY			SIZE CODE IDENT NO. DRAWING NO. REV. B 08505 9207			
		FINISH SEE NOTE				SCALE 2:1 SHEET 1 OF 1			
NEXT ASSY	USED ON								
APPLICATION		DO NOT SCALE DRAWING							