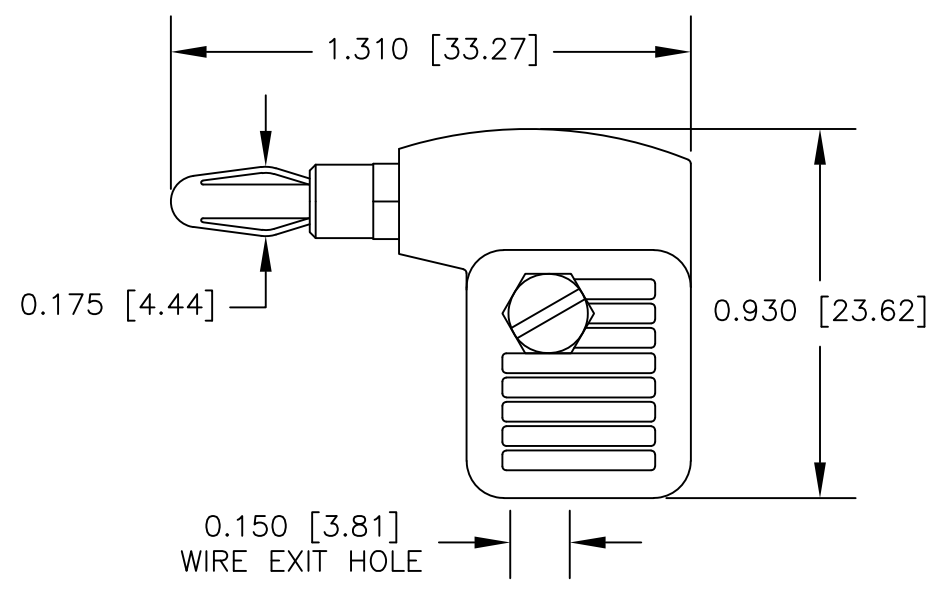


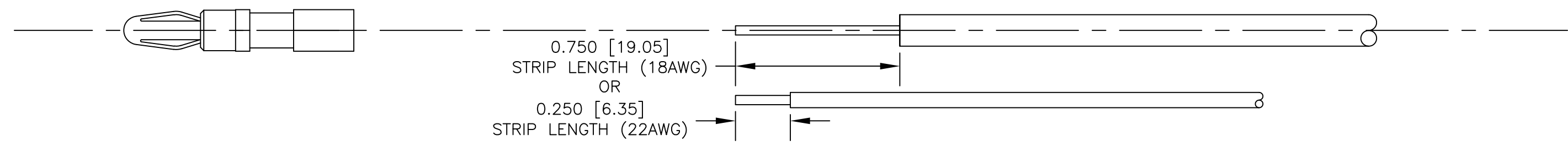
NOTES: UNLESS OTHERWISE SPECIFIED

- CONSTRUCTION:
 HOUSING: MOLDED ABS. AVAILABLE IN BLK OR RED
 FRAME: NICKEL PLATED BRASS.
 CONTACT: NICKEL PLATED BeCu.
 HARDWARE: SS SCREW & NUT
- PERFORMANCE:
 MAXIMUM CURRENT: 10 AMPS
 MAXIMUM VOLTAGE: 1 kV
 MAXIMUM TEMPERATURE: 176°F (80°C)



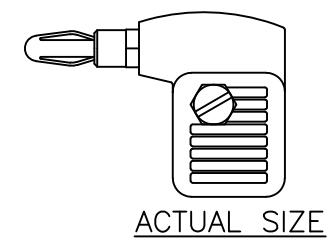
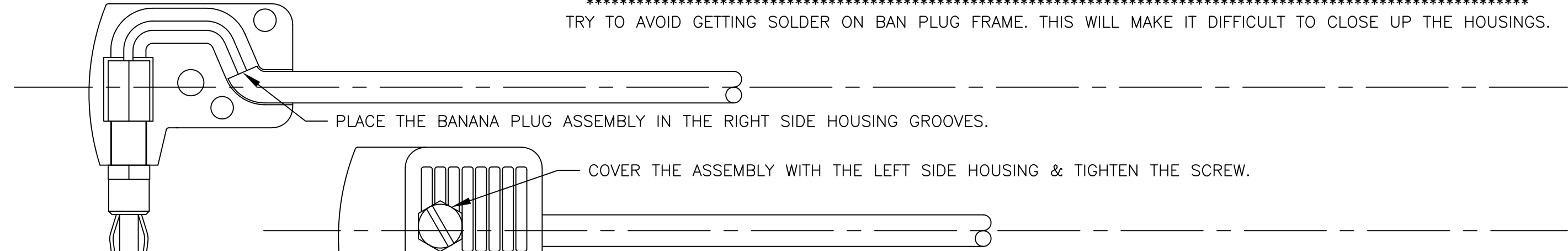
LTR	DESCRIPTION	REVISIONS	
		DATE	APPROVED

ASSEMBLY INSTRUCTIONS



MELT SOME SOLDER IN THE STD BAN PLUG SOLDER HOLE. WHILE THE SOLDER IS HOT QUICKLY INSERT THE STRANDING INTO THE SOLDER HOLE. REMOVE THE BAN PLUG FROM THE HEAT. HOLD THE WIRE IN PLACE WHILE THE SOLDER HARDENS.

 TRY TO AVOID GETTING SOLDER ON BAN PLUG FRAME. THIS WILL MAKE IT DIFFICULT TO CLOSE UP THE HOUSINGS.



UNLESS OTHERWISE SPECIFIED DIMENSIONS ARE IN INCHES TOLERANCES ARE: FRACTIONS DECIMALS ANGLES ± N/A .XX ± N/A ± N/A .XXX ± N/A		CONTRACT NO.		E-Z-HOOK DIVISION OF TEKTEST INC. ARCADIA, CA 91006 U.S.A.	
		APPROVALS	DATE		
MATERIAL SEE NOTE		DRAWN	R.L.	4/18	DESCRIPTION METER BANANA PLUG
		APPROVED BY			
FINISH SEE NOTE		SIZE	CODE IDENT NO.	DRAWING NO.	REV.
NEXT ASSY	USED ON	SCALE		2:1	SHEET 1 OF 1
APPLICATION		DO NOT SCALE DRAWING			