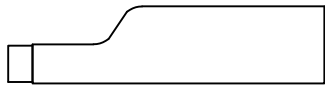
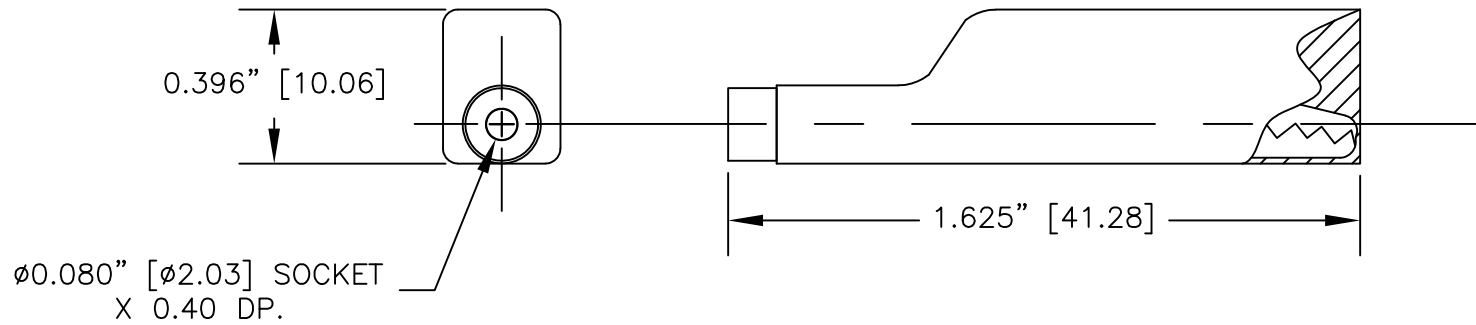


NOTES: UNLESS OTHERWISE SPECIFIED

- 1. CONSTRUCTION:  
 INSULATOR: MOLDED PVC. AVAILABLE IN TEN COLORS.  
 ALLIGATOR: NICKEL PLATED STEEL.  
 SOCKET: NICKEL PLATED BRASS.  
 CONTACT SPRING: SILVER PLATED BeCu.
- 2. PERFORMANCE:  
 MAXIMUM CURRENT: 5 AMPS

REVISIONS			
LTR	DESCRIPTION	DATE	APPROVED



ACTUAL SIZE

		UNLESS OTHERWISE SPECIFIED DIMENSIONS ARE IN INCHES TOLERANCES ARE: FRACTIONS DECIMALS ANGLES ± .XX ± ± .XXX ±	CONTRACT NO.		<b>E-Z-HOOK</b> DIVISION OF TEKTEST INC. ARCADIA, CA 91006 U.S.A.				
			APPROVALS	DATE					
		MATERIAL SEE NOTE.	DRAWN	R.L.	3/09	DESCRIPTION			
			APPROVED BY	MINI ALLIGATOR (9274) TO STD 0.080 [2.03] SOCKET					
		FINISH SEE NOTE.				SIZE	CODE IDENT NO.	DRAWING NO.	REV.
NEXT ASSY	USED ON					A	08505	8015	
APPLICATION		DO NOT SCALE DRAWING				SCALE	2:1		SHEET 1 OF 1